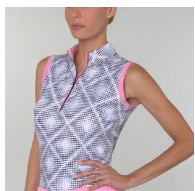


## GOLF COURSE & PRACTICE FACILITY DRESS REGULATIONS

### ACCEPTABLE ATTIRE



Shirts with collars, Polo style or those expressly designed as golf attire



Sleeveless golf tops for ladies



- Long tailored and studded pants
- 3/4 length tailored pants
- Tailored shorts
- 'Cargo' shorts



Golf Shoes (soft spikes only)  
Socks worn with shorts must be colour coordinated with golfing attire or be white or cream colour



Sneakers

### UNACCEPTABLE ATTIRE



Shirts with excessive advertising, slogans, cartoons or expressions



T-Shirts, Singlets or Tank Tops or shirts unbuttoned below the chest



Drawstring or elastic waste pants or shorts



Denim jeans

Track pants or non-tailored pants or shorts



Shoes without socks



Thongs or Sandals



THE EASTERN GOLF CLUB

## CLUBHOUSE DRESS REGULATIONS

All the attire acceptable on the course and practice practice facility is acceptable in the Clubhouse and on the terrace with the following exceptions or conditions:

### ACCEPTABLE ATTIRE



Denim jeans that are clean and in good condition are acceptable in the Clubhouse (this does not include 'designer' jeans that are full of holes or ripped)



Colour coordinated socks to be worn with shorts or be white or cream in colour



Soft spiked golf shoes may be worn in any area of the clubhouse



Shoes and sandals designed to be worn without socks may be worn

### UNACCEPTABLE ATTIRE



No hats may be worn in the Clubhouse



Singlets are not permitted in the Clubhouse or Terrace



Thongs

The Board, Management and staff reserve the right to refuse entry to the course or clubhouse if in their opinion, there is non-compliance with the above regulations. Mobile Phones must be switched off, or turned to silent, and may not be used in The Members' Lounge & Bar & The Members' Dining Room.